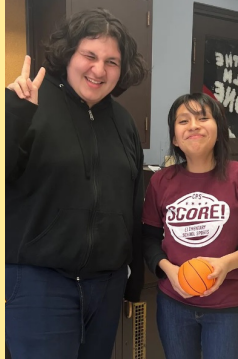
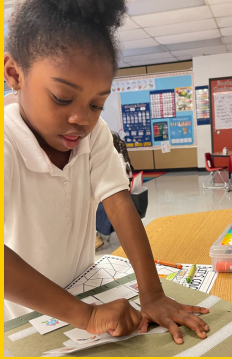




Communities
In Schools®

Chicago



Every young person has a story. It's a story that's unique, as unique as our city, from the North Side to the South Side to the West Side. It's a story that's been impacted by the number of challenges now facing our community and our world. It's a story that's just begun.

Communities In Schools (CIS) of Chicago empowers our city's young people to embrace their stories and continue writing their next chapters. In partnership with schools and community partners, we help students:

- Build relationships with their peers, with their families, with their teachers, and with other caring adults that drive their success;
- Gain strategies for keeping their mental, physical, and emotional health strong;
- Explore their passions and expand their horizons;
- Improve their academic performance, behavior, and attendance;
- And, ultimately, stay on the path to graduation.

CIS of Chicago is dedicated to removing any immediate and systemic barriers that stand in the way of young people. We surround them with a community of support so they can stay in school and achieve in life.

This year, our team will positively impact the lives of 78,000 students at 238 Chicago public schools. Now, more than ever, we are supporting our young people, their families, and their school communities. We are meeting the moment, and we are deepening our impact.

Our Vision:

Every student graduates prepared for success.

Graduation.

It's a key differentiator. Graduates not only earn more over their lifetimes; they experience better health and wellness outcomes, too.

There's nothing magical in the diploma itself. Instead, the K-12 journey equips young people with the skills for lifelong learning, coping, socialization, and goal-setting that prepare them for continued success. But even the most tenacious student can be diverted from the path to graduation early on.

CIS of Chicago supports students holistically so they have everything they need to succeed. In the 2023-24 school year, CIS of Chicago will support more than 78,000 students in 238 Chicago public schools. We carry out our work through two core programs:

Our Partnership Program

coordinates the supports and resources of a vast network of community partners to the schools in our partner network. Supports are equitable and inclusive, addressing the specific needs of diverse schools and families.

Our Intensive Program

embeds a master's-level professional, or Student Supports Manager, in 38 of the 238 schools to provide supportive guidance, goal-setting, and other tailored interventions to students who are off-track in their attendance, behavior, or grades.

Student Supports Managers also help students build social and emotional skills that help them succeed in school and be well-equipped for life beyond graduation.

In recent years, the five-year high school graduation rate in Chicago is above 80 percent for all students. However, that rate is not even across all school populations.

CIS prioritizes working in communities where student need is high and graduation is not assured so that we can create and sustain equitable outcomes for all students.



In the 2023-24 school year, we are working with 238 school partners:

- **200 Partnership Program sites,** where our team collaborates with school staff to leverage the power of community partner supports for students and families
- **38 Intensive Program sites,** where an embedded CIS Student Supports Manager works with students, families, and the entire school

The CIS of Chicago team and our community partners provide tailored support to students in six key areas:

- Academic support
- Arts and culture
- College and career readiness
- Counseling and supportive guidance
- Health and wellness
- Parent and family engagement





In June 2023, principals and other school leaders were surveyed about the impact of CIS of Chicago's partnership. These were their responses:

- **96 percent** reported that since partnering with CIS of Chicago, their school accesses more needed services.
- **94 percent** reported that since partnering with CIS of Chicago, their school can better identify and address student needs.
- **78 percent** reported that the services that CIS of Chicago connects helps students stay on track academically.
- **78 percent** reported that CIS of Chicago helps prevent future dropout problems, putting students on the path to long-term success.

Of the more than 5,400 students we have provided with ongoing intensive support since 2009, **fewer than 1 percent dropped out. During the last five years as our program has grown significantly, 99 percent either graduated or were promoted to the next grade** in the year that CIS of Chicago worked with them.

Our Theory of Change

WHAT WE DO

Provide essential supports to K-12 students according to their need



Develop student relationships with caring adults

HOW WE DO IT

Partnership Program:

Connect and coordinate essential services to students and families



Intensive Program:
Directly support students with high need

SHORT-TERM OUTCOMES

Develop social, emotional, academic, and health competencies



Improve attendance, behavior, coursework, and academic proficiency

LONG-TERM OUTCOMES

Reduce dropout



Increase graduation

ASPIRATIONAL VISION

Every public-school student in Chicago graduates from high school prepared for further success

School Partners: 2023-24

Acero Charter Schools – Brighton Park

Acero Charter Schools – Marquez*

Acero Charter Schools – Rufino Tamayo

Acero Charter Schools – Sor Juana Inés de la Cruz

Jane Addams Elementary

Ariel Community Academy

Philip D. Armour Elementary School

Distinctive Schools | Chicago: Art in Motion

Ashburn Community Elementary School

Avalon Park Elementary School

Mariano Azuela Elementary School

Alice L. Barnard Elementary School*

John Barry Elementary School

Clara Barton Elementary School*

Beasley Academic Center

Beethoven Elementary

Hiram H. Belding Elementary School

Robert A. Black Magnet Elementary School*

Carrie Jacobs Bond Elementary School

Edward A. Bouchet Math & Science Academy*

Bowen High School

Joseph Brennemann Elementary School

Norman Bridge Elementary School

Ronald Brown Elementary Community Academy*

William H. Brown Math & Science Magnet School

Charles S. Brownell Elementary School

Burnham/Anthony Mathematics & Science Academy

Daniel R. Cameron Elementary

Marvin Camras Elementary School

Lázaro Cárdenas Elementary

Rachel Carson Elementary

Willa Cather Elementary School

Thomas Chalmers Specialty Elementary School

Salmon P. Chase Elementary School

Cesar E. Chávez Multicultural Academic Center

Chicago Collegiate Charter School

Frederic Chopin Elementary School

Walter S. Christopher School

CICS – Ralph Ellison

CICS – Prairie

CICS – West Belden

Claremont Academy Elementary

Michele Clark Academic Prep

Magnet High School

Henry Clay Elementary School

Grover Cleveland Elementary School

Johnnie Coleman Academy

Columbia Explorers Academy

Christopher Columbus Elementary School

John W. Cook Elementary School*

Daniel J. Corkery Elementary

Courtenay Elementary Language Arts Center

Richard T. Crane Medical Preparatory High School*

Crown Community Academy

Marie Curie Metro High School*

Darwin Elementary

Nathan S. Davis Elementary School

Charles S. Deneen Elementary School

Oscar DePriest Elementary School

Robert Nathaniel Dett Elementary School

Everett McKinley Dirksen Elementary School

Arthur Dixon Elementary School

John B. Drake Elementary

W.E.B. DuBois Elementary School

Walter Henri Dyett High School for the Arts*

Charles W. Earle Elementary School

John F. Eberhart Elementary

Richard Edwards Elementary School

Erie Elementary Charter School

Edward Everett Elementary School

Fairfield Elementary Academy

Michael Faraday Elementary School

David G. Farragut Career

Academy High School

Christian Fenger Academy High School

Eugene Field School

Gage Park High School

Stephen F. Gale Community Academy

Galileo Scholastic Academy

Matthew Gallistel Elementary Language Academy

Marcus Moziah Garvey Elementary

J.W. von Goethe Elementary School

Alexander Graham Elementary*

Nathanael Greene Elementary School

John Milton Gregory Elementary School

Robert L. Grimes School

Virgil Grissom Elementary School

Frank W. Gunsaulus Elementary Scholastic Academy

John C. Haines Elementary School
Nathan Hale School
John H. Hamline Elementary School
Hanson Park Elementary School
John M. Harlan Community Academy
High School*

Helge A. Haugan Magnet School
Stephen K. Hayt Elementary

James Hedges Elementary School*
**Helen M. Hefferan Elementary
School**

Charles R. Henderson Elementary
School
Thomas A. Hendricks Elementary
Community Academy
Patrick Henry Elementary School
Irene C. Hernandez Middle School for
the Advancement of Science
Theodore Herzl Elementary School
William G. Hibbard Elementary
School*
Thomas J. Higgins Elementary
Community Academy*
Charles N. Holden Elementary School
Charles Evans Hughes Elementary
School
Edward N. Hurley Elementary School
Washington Irving Elementary School
Mahalia Jackson Elementary School*
Scott Joplin Elementary School
Jordan Community School
Percy L. Julian High School

Joseph Jungman School
Thomas Kelly College Preparatory
Joshua D. Kershaw Elementary School
Joyce Kilmer Elementary School
Dr. Martin L. King, Jr. Academy of
Social Justice

John Kinzie Elementary
Rudyard Kipling Elementary School
KIPP Chicago Charter School – KIPP
Ascend*

KIPP Chicago Charter School – KIPP
Bloom
KIPP Chicago Charter School – KIPP
One*

Anna R. Langford Community
Academy
Lawndale Elementary Community
Academy
L.E.A.R.N. Charter Excel Campus
Richard Henry Lee Elementary School
George Leland Elementary School
Leslie Lewis Elementary School
Arthur A. Libby Elementary School*
Little Village Academy

**Little Village Lawndale High
School – Infinity***

**Little Village Lawndale High
School – Multicultural Arts***

**Little Village Lawndale High
School – Social Justice***

**Little Village Lawndale High
School – World Language***

Alain Locke Charter School
Joseph Lovett Elementary School*

James Madison Elementary School*
George Manierre Elementary School*
John L. Marsh Elementary School

John Marshall Metropolitan High
School*

Roswell B. Mason Elementary School
Stephen T. Mather High School

Benjamin E. Mays Academy
Genevieve Melody Elementary
Minnie Miñoso Academy
Ellen Mitchell Elementary
Irvin C. Mollison Elementary School
Monarcas Academy
James Monroe Elementary

Bernhard Moos Elementary School*
Donald Morrill Math & Science
Elementary School

Mosaic School of Fine Arts
John B. Murphy Elementary
Henry H. Nash Elementary School*
New Sullivan Elementary School
Nicholson Technology Academy
Florence Nightingale Elementary
School*

William P. Nixon Elementary

North Lawndale College Prep –
Christiana
North Lawndale College Prep –
Collins

Alfred Nobel Elementary School
Noble – Butler College Prep*
Noble – DRW College Prep

Noble – Gary Comer College Prep*
Noble – Mansueto High School

Noble – UIC College Prep*

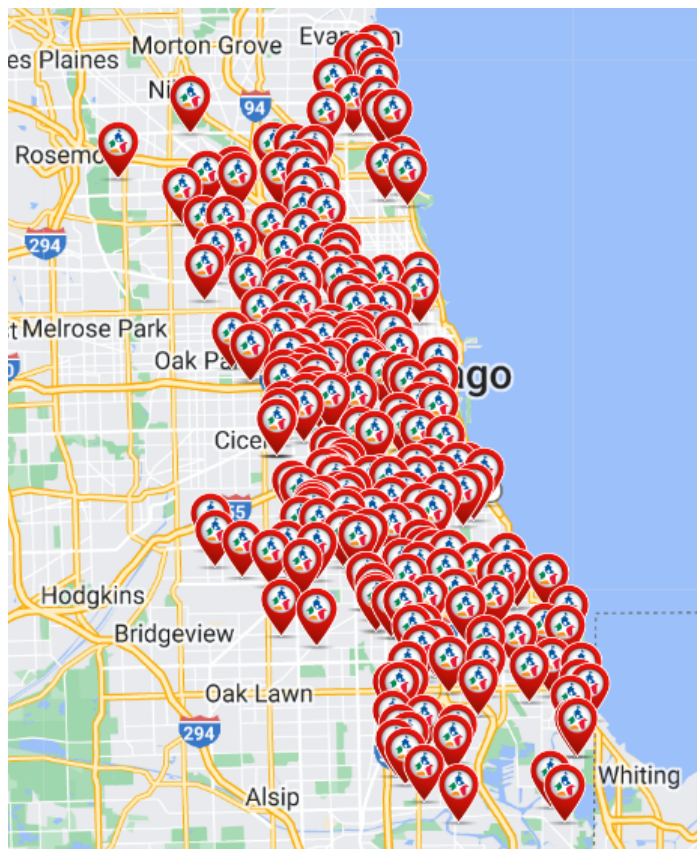
Ogden International High School
The Ogden International School of
Chicago – Jenner Campus
William J. Onahan Elementary School*
James Otis World Language Academy
John Palmer Elementary School
Francis W. Parker Elementary
Community Academy
Parkside Elementary Academy
Ferdinand Peck Elementary School
Perspectives – Rodney D. Joslin
Perspectives – Leadership Academy
Perspectives – Math and Science
Academy
Perspectives – High School of
Technology

**Phoenix Military Academy High
School**

Brian Piccolo School of Excellence
Pilsen Community Academy
Portage Park Elementary School
Adam Clayton Powell Paideia
Community Academy

**A. Philip Randolph Elementary
School**

William Claude Reavis Elementary
Frank W. Reilly Elementary School*
Theodore Roosevelt High School
Rowe Elementary School*
Martha Ruggles Elementary School
Irma C. Ruiz Elementary School*
Ryder Math & Science Specialty
School



Sabin Magnet School
 Edward E. Sadlowski Elementary School
 Socorro Sandoval Elementary School
Maria Saucedo Elementary Scholastic Academy
 Sidney Sawyer School
 Theophilus Schmid Elementary
 Nicholas Senn High School*
 Mark Sheridan Math and Science Academy
 Sherman School of Excellence
 Jesse Sherwood Elementary
 James Shields Middle School
 John D. Shoop Math-Science Technical Academy
 Mark T. Skinner School
Smyser Elementary School*
 John M. Smyth Elementary School
 Eric Solorio Academy High School
 South Loop Elementary School
 Southside Occupational High School
 John Spry Community School
 Amos Alonzo Stagg Elementary
 Charles P. Steinmetz Academic Centre
 Adlai E. Stevenson Elementary School
 Stone Scholastic Academy
 Harriet Beecher Stowe Dual Language School
 George B. Swift Specialty School
 Mancel Talcott Elementary School
 Douglas Taylor Elementary
 James N. Thorp Elementary School

Edward Tilden Career Community Academy High School*
 Tilton Elementary
 Turner-Drew Language Academy
 Uplift Community High School
Jacqueline B. Vaughn Occupational High School
 Alessandro Volta Elementary School
 Carl Von Linne Elementary School
 Charles H. Wacker Elementary School
 Walsh Elementary
 James Ward Elementary School
 Laura S. Ward Elementary School*
 Harold Washington Elementary School
 George Washington Elementary School
George Washington High School
Daniel Webster Elementary
 West Park Elementary School*
Oliver Westcott School
 John Whistler Elementary
 Edward H. White Elementary Career Academy
 Carter G. Woodson South Elementary School
 Emiliano Zapata Elementary Academy*

**Indicates new partner schools for 2023-24. Bolded font indicates an Intensive Program site.*

Community Partners: 2022-23

CIS of Chicago works with a network of more than 215 nonprofits, cultural institutions, social service agencies, and individuals from across Chicago and connects them directly to schools and students who need their services the most.

All programming is provided at no cost to the schools or students, and they have major impact.

Students who benefitted from support programs and services through CIS' community partner network performing better in math and reading.

ACADEMIC ENRICHMENT

826CHI
Adler Planetarium
Big Brothers Big Sisters of Metropolitan Chicago
Center on Halsted
Chicago Blackhawks
Chicago Innovation Foundation
CircEsteem
Compudopt
Cook County Farm Bureau
Dolores Kohl Education Foundation
Dream On Education*
Educate. Radiate. Elevate.*
Focus Fairies Mentoring*
Forest Preserve of Cook County
FUSE
Girls Who Code
Greater Chatham Initiative
Learning Edge*
Metropolitan Water Reclamation District of Greater Chicago
Peggy Notebaert Nature Museum
Plant Chicago*
Saxena Lab at UIC*
Science Olympiad

Shedd Aquarium
SitStayRead
SparkShop
Success Bound*
Supplies for Dreams
The Actuarial Foundation
The Anti-Cruelty Society
White Sox
Working In The Schools (WITS)

ARTS AND CULTURE

Abrahamic Center for Cultural Education (ACCE)
American Writers Museum
Art Encounter
Art Institute of Chicago
Brainchild Collective/Design Dance
Center on Halsted
Chicago Chamber Music Society
Chicago Children's Theatre
Chicago Jazz Philharmonic
Chicago Opera Theater
Chicago Philharmonic*
Chicago Youth Symphony Orchestra
Classical Music Chicago
CodeCreate

CPS Lives
CSO/Negaunee Music Institute
Culture Shock Dance Chicago
Ensemble Español
Escape Artistry
Freddie Almazan
Goodman Theatre
Haitian American Museum of Chicago*
Ignition Community Glass
Institute for the Study of Ancient Cultures
Joffrey Ballet
KWOE Foundation
Lifeline Theatre*
Lynx Project
Lyric Opera of Chicago
Marwen
MeMA Music
Museum of Contemporary Art
Music of the Baroque
Narrative 4
National Museum of Mexican Art
Natya Dance Theatre
Northlight Theatre
Old Town School of Folk Music
Poetry Foundation

ARTS AND CULTURE (CONTINUED)

Pro Football Hall of Fame
Reva and David Logan Center for the Arts
Silk Road Rising
Smart Museum of Art
Steppenwolf Theatre Company
Storycatchers Theatre
Travis Manion Foundation
Visceral Dance Chicago*
Wellness4Every1
WFMT Bach to School
Writers Theatre
You Are A Star/StarDreamers
Storytellers

BEHAVIORAL AND MENTAL HEALTH

Blue Bird Day & Eyas Landing*
Catholic Charities
Center for Conflict Resolution*
Center on Halsted
Charlie Health*
Chicago Chess Foundation
Chicago Survivors
Chiro One
Common Sense Education
Cook County State's Attorney
CPS - Crisis Management Unit
Creative Passages*

Elizabeth Tawose Productions*
Elyssa's Mission
Erasing the Distance
Erika's Lighthouse
Friends of the Children Chicago*
Garfield Park/Hartgrove Hospitals
Greater Chatham Initiative
GRO Community*
Guardian Lane
HEART
Hope for the Day*
Illinois Holocaust Museum &
Education Center
Illinois Safe Schools Alliance Program
of PHIMC
Imagination Theater
Insight Project for Kids
InterAction*
International Children's Media Center
Lutheran Social Services of Illinois
Move This World*
Mujeres Latinas en Acción
My Familytree Storybook
NAMI Chicago
Nancy Gardner, LCSW
National Campaign to Stop Violence
National Indo-American Museum
Once Upon Our Time Capsule*
Phoenix Clinic Chicago
RAINBOWS
Resource Center for Autism and
Developmental Delay
Riverview Hospital/Streamwood
Hospital

SGA Youth & Family Services
The Anti-Cruelty Society
The Anti-Defamation League
The Legacy Project*
The Nora Project
The Peace Exchange
The Schools Group
UCAN
University of Illinois Extension
Urban Therapeutic Solutions
White Sox
Willow House
WTTW11/98.7wfmt
YWCA Metropolitan Chicago

COLLEGE AND CAREER READINESS

Abrahamic Center for Cultural
Education (ACCE)
All Stars Project*
Argonne National Laboratory
BMO Harris Bank
Bottom Line
CareerSpring*
Chicago Area Health Education
Center
Civic Leadership Foundation
CPS - Office of Student Health and
Wellness (OSHW)
Credit Abuse Resistance Education
(CARE)
DePaul University Athletics



COLLEGE AND CAREER READINESS (CONTINUED)

Federal Reserve Bank of Chicago*
Fifth Third Bank
Future Founders Foundation
Garfield Park/Hartgrove Hospitals
Harry S. Truman College
HEART
Illinois Holocaust Museum &
Education Center
Joffrey Ballet
Junior Achievement of Chicago
Ladder Up
Metropolitan Water Reclamation
District of Greater Chicago
Museum of Contemporary Art
Pulitzer Center
Southwest Airlines*
The Anti-Cruelty Society
The Anti-Defamation League
University of Chicago Admissions
University of Chicago Basketball
U.S. Army Corps of Engineers
Zurich

FUNDAMENTAL NEEDS

A Just Harvest
Alice's Kids
Blessings in a Backpack

Catholic Charities
Cradles to Crayons
Delta Dental of Illinois
Her Drive Co.
Nourishing Hope
Prosper Chicago
Soles4Souls*
The Period Collective

HEALTH AND WELLNESS

Ageless Eyecare
American Red Cross of Greater
Chicago
Between Friends
Candor Health Education
CDPH - Immunization Program
CDPH - Tropical Optical
Chicago Alliance Against Sexual
Exploitation
Chicago Children's Advocacy Center
Chicago City Soccer Club
Chicago Community Oral Health
Forum
Chicago Department of
Transportation
Chicago Fire
Chicago Fire Department
Chicago Police Department
Chicago Run
Chicago Women's Health Center
Colgate Bright Smiles Bright Futures
Common Threads

ConnecTeen
Cook County Farm Bureau
Delta Dental of Illinois
Erie Family Health Center
Fit Kids
Girls in the Game
Global Project Hope
Haymarket Center
Howard Brown Center: BYC
Imagination Theater
Lurie Children's Hospital of Chicago
Metropolitan Family Services
Pilot Light
Planned Parenthood of Illinois
Resilience
Respiratory Health Association
Rush University Medical Center
Sarah's Inn
The Anti-Cruelty Society
The Evolved Network*
U.S. Teqball Federation
University of Illinois Extension
Vision Service Plan
YWCA Metropolitan Chicago

**Indicates community partners
new to the CIS of Chicago network
in 2022-23.*



Our Accomplishments in 2022-23

Graduates of the Class of 2023 are crystallized in time as students who experienced adversity over the course of their educational journeys but persevered. The pandemic closed schools during their freshmen year, they navigated remote learning during their sophomore year, and they returned to in-person learning their last two years, demonstrating tremendous resilience to earn their diplomas.

Each step of the way, our team at Communities In Schools of Chicago walked with our city's students – tailoring our supports at every turn – to make sure that they had everything they needed to succeed in school and life.

We provided students and families with holistic supports that addressed their social, emotional, and mental health so they could stay focused on coming to school, learning from their teachers and peers, and continuing on the path to graduation. And we supported our school and community partners so that they could continue serving young people. We're proud of the major impact our team had during the 2022-23 school year.

In the 2022-23 school year, we:

Supported 69,483
Chicago students

Furnished 11,576
families with essential needs items

Connected 1,965
programs and services to schools

Served 1,363
targeted students with counseling and guidance

Linked 204
community organizations to schools

Partnered with 200
Chicago Public Schools

A photograph of three children sitting at a yellow table in a classroom, working on a puzzle. The child on the left is a girl with braided hair adorned with colorful beads and flowers, wearing a dark blue polo shirt. The child in the middle is a girl with long dark hair, also wearing a dark blue polo shirt. The child on the right is a boy wearing a face mask with a colorful pattern and a dark blue t-shirt with the word 'GARDENAS' and a graphic. They are all focused on assembling puzzle pieces. On the table, there is a box of '350 MINI PUZZLES' featuring a cartoon character, a small white teddy bear, and several puzzle pieces. The background shows shelves filled with red storage bins and various classroom supplies.

SOCIAL-EMOTIONAL LEARNING

CIS of Chicago programs support the growth and development of our city's young people by providing them with the skills to better understand themselves, manage their emotions, and build healthy relationships with others.



YOUTH MENTAL HEALTH FIRST AID

Several CIS team members are trained facilitators in Mental Health First Aid, and they lead sessions throughout the school year that empower adults with the tools to support young people experiencing a mental health crisis.



MRS. ESTRADA



TENACITY AWARDS

CIS recognizes one student at each of our Intensive partner schools who has overcome barriers to their learning and persevered to stay on the path to graduation. In 2022-23, 31 students were presented with a Tenacity Award.

tenacious.

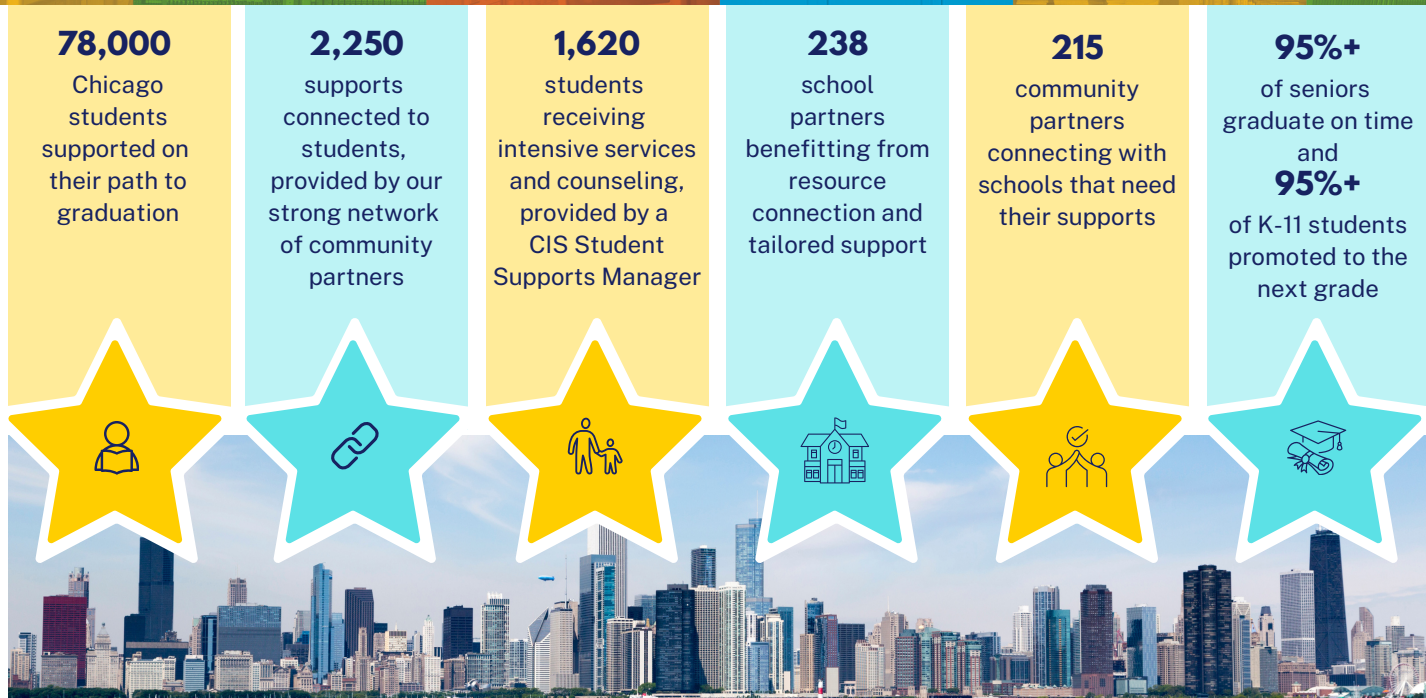
Communities
In Schools.



DO THE WRITE THING (D&WT)

CIS of Chicago proudly co-sponsors Do the Write Thing, a national writing program that amplifies youth voice and calls for an end to violence. Each year, two Chicago students serve as ambassadors at the D&WT Summit in DC.

Our Goals in 2023-24



In the Words of Our Students and Partners

CIS OF CHICAGO STUDENTS



“

"In a time where I was unmotivated, felt isolated, and alone, Ms. Estrada (my CIS Student Supports Manager) taught me that I can trust others and that I can trust myself. Having her around to listen to me, encourage me, and teach me new skills helped me to become a better and healthier person. I know that I can do great things in the future and I can follow my dreams."

– **Jaylin, a CIS student**



"For some people, their house is not their home. For some (people), school can be their home. Having someone like Ms. Bajzek (my CIS Student Supports Manager) can make school a home for a lot of students, and it's important to have somewhere that feels like that."

– **Adamaris, a CIS student**

CIS OF CHICAGO PARTNERS



"(CIS) increases our ability to bring arts programming and education to more Chicago students and schools in underserved neighborhoods."

– **Culture Shock Chicago, a CIS community partner**



"CIS of Chicago has afforded our scholars numerous ways to use the city of Chicago as a classroom, to employ conflict resolution skills, enrich their talents and skills, and nurture their engagement in school."

– **Principal Tamara Davis, Herzl Elementary School, a CIS school partner**

”

Communities In Schools of Chicago
www.cisofchicago.org
815 W. Van Buren Street, Suite 300
Chicago, IL 60607
312.829.2475

